

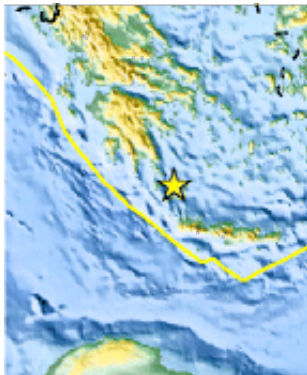
# Magnitude 6.8 - SOUTHERN GREECE

## 2006 January 8 11:34:53 UTC

### Preliminary Earthquake Report

U.S. Geological Survey, National Earthquake Information Center  
[World Data Center](#) for Seismology, Denver

A strong earthquake occurred at 11:34:53 (UTC) on Sunday, January 8, 2006. The magnitude 6.8 event has been located in SOUTHERN GREECE. (This event has been reviewed by a seismologist.)



**Magnitude** 6.8

**Date-Time** Sunday, January 8, 2006 at 11:34:53 (UTC)  
 = Coordinated Universal Time  
 Sunday, January 8, 2006 at 1:34:53 PM  
 = local time at epicenter  
**Time of Earthquake in other Time Zones**

**Location** 36.204°N, 23.444°E

**Depth** 48.4 km (30.1 miles) set by location program

**Region** SOUTHERN GREECE

**Distances**

90 km (55 miles) NW of **Chania, Crete, Greece**  
 150 km (95 miles) SE of **Kalamata, Greece**  
 185 km (115 miles) WNW of **Iraklion, Crete, Greece**  
 200 km (125 miles) S of **ATHENS, Greece**

**Location Uncertainty** horizontal +/- 5 km (3.1 miles); depth fixed by location program

**Parameters** Nst=226, Nph=226, Dmin=73 km, Rmss=0.93 sec, Gp= 32°,  
 M-type=moment magnitude (Mw), Version=Q

**Source** USGS NEIC (WDCS-D)

**Event ID** ushrak

[News Release](#)

[Organizations](#)

**Tectonic**

[European-Mediterranean](#)